

## Extraction equipment

### Face to Face with Present-day Dinos.



KU 800 bucket wheel excavator



KU 300 bucket wheel excavator



RK 5000 chain bucket excavator



ZP 6600 spreader

Type	KU 800 bucket wheel excavator	KU 300 bucket wheel excavator	RK 5000 chain bucket excavator	ZP 6600 spreader
Output per hour	2,500 cubic metres/hour	1,200 tonnes of coal/hour	2,000 cubic metres/hour	More than 2,500 cubic metres/hour
Weight	4,300 tonnes	1,250 tonnes	5,500 tonnes	1,790 tonnes
Height	51.3 m	28 m	40 m	30 m
Length	150 m	66 m	160 m	156 m
Wheel diameter	13 m	7.3 m	It has no wheel but a chain with scooping buckets	It has no wheel
Maximum cutting height	32 m	19.5 m	19.5 m	
Undercarriage type	walking	caterpillar	walking	walking
Operators	5 employees	4 employees	6 employees	4 employees
Total rated electrical capacity	8,000 kW	2,000 kW	9,000 kW	4,000 kW
Input voltage	35 kV	6 kV	35 kV	6 kV

## Reclamation

### Landscape Reclamation Is Our Priority.

Reclamation means the active restoration and formation of soil in the area devastated by industrial use. Reclamation must be planned and designed, and the individual parts (fields, forests, meadows and water bodies) must fit together functionally. An ecologically balanced landscape is formed with a stable ecosystem, which is economically efficient and acceptable in social, medical and public health terms.

The Mining Act requires extraction companies to restore the landscape at their own cost following extraction.

An area of almost 7,000 hectares has been reclaimed and returned to use in the Most area over the past 60 years.



#### Types of reclamation:

Sylvicultural / Agricultural / Hydrological / Other

#### Reclamation phases:

Technical phase / Cultivation phase

#### Fauna on extraction sites and spoil heaps:

Mouflon sheep / Sand martin / Fox / Wild boar / Common kestrel / Greylag goose / Swan



# WELCOME TO COAL SAFARI

[www.uhelnasafari.cz](http://www.uhelnasafari.cz) |



[www.vrsanskauhelna.cz](http://www.vrsanskauhelna.cz)



[www.sev-en.cz](http://www.sev-en.cz)

For more information please visit: [www.sev-en.cz](http://www.sev-en.cz) and [www.czechcoal.cz](http://www.czechcoal.cz)



**Severní energetická a.s.**

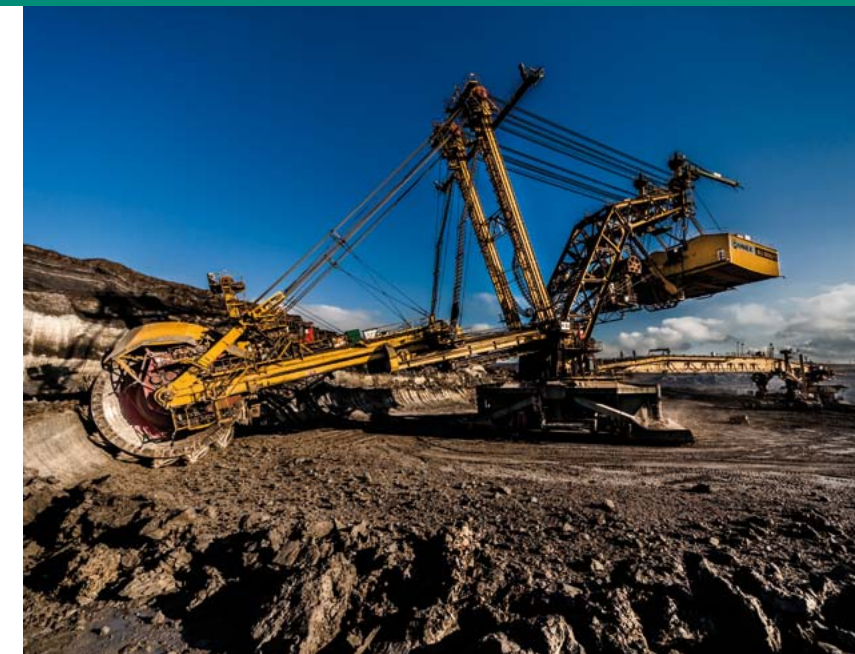
The Company manages the Československá armáda (ČSA) coal extraction site, including the homogenisation plant and the Komořany Coal Preparation Plant. The company is the founder of the Most Main Mining Rescue Station. It is part of the Severní energetická Group, which also operates the Chvaletice Power Station.

The ČSA surface mine holds highly calorific coal; in terms of technology, this coal is more suitable for combined heat and power generation. Approximately a million Czech households depend on supply of heat from district heating based on brown coal.



**Vršanská uhelná a.s.**

Vršanská uhelná a.s., part of the Czech Coal Group controlled by financier Pavel Tykač, extracts brown coal at the Vršany site in the central part of the North Bohemian Brown Coal Basin. This site holds coal reserves with the longest life, stretching beyond 2055, in the Czech Republic within the existing mining limits.



**There are three specialised routes to choose from.**

**Route 1**

**The ČSA surface mine**

**Equipment:** A unique RK 5000 chain bucket excavator  
**Geology:** The country's largest brown coal reserves (750 million tonnes beyond the mining limits)  
**Biology:** A mouflon sheep herd (up to 150 heads), fox, wild boar, predators  
**Environment:** sylvicultural, agricultural and hydrological reclamation



**The Vršany surface mine**

**Equipment:** Rail transport using a ZD 2100 rail mounted stacker  
**Geology:** A split coal seam  
**Biology:** Mouflon sheep, fox, wild boar, pheasant, sand martin  
**Environment:** reclamation: vineyards, soft landscaping, sylvicultural and hydrological reclamation

**Route 2**



**Route 3**

**The Benedikt and Hipodrom sites, the Vršany viewing terrace, the Most lake, the area of the deanery church**

**Equipment:** From the Vršany mine viewing terrace: KU 800, KU 300, ZP 6600  
**Geology:** A coal seam; overlaying earths – clays and claystone  
**Biology:** Greylag goose, common kestrel, European hare, common European frog  
**Environment:** Wetlands, herbaceous vegetation, halophytic plants



reclamation



Extraction at the ČSA surface mine is constrained by Czech Government Resolution No. 444/1991 on coal mining limits from 1991. Some 750 million tonnes of the Czech Republic's most calorific brown coal are located beyond these limits. If the cabinet does not soon take a firm decision on the future of the mining limits, extraction at this site may have to be discontinued after 2022.



In 2013, Vršanská uhelná a.s. [VUAS] entered into an up to 50-year agreement on coal supply for the Počerady Power Station with ČEZ, a.s., a major Czech utility. For VUAS, this contract provides long-term prospects, and opportunities to invest and, above all, to maintain jobs.